

# Shock-Proof Protection Caps (Set)

## T10608

<b>en-gb</b>	Original Instructions	<b>fi</b>	Alkuperäiset ohjeet	<b>pl</b>	Oryginalne instrukcje
<b>de</b>	Originalbetriebsanleitung	<b>fr-fr</b>	Instructions d'origine	<b>pt-br</b>	Instruções originais
<b>ar</b>	التعليمات الأساسية	<b>he</b>	הוראות מקוריות	<b>pt-pt</b>	Instruções originais
<b>bg</b>	Оригинално ръководство за експлоатация	<b>hr</b>	Izvorne upute	<b>ro</b>	Instrucțiuni originale
<b>cs</b>	Originální návod k použití	<b>hu</b>	Eredeti útmutató	<b>ru</b>	Инструкции на языке оригинала
<b>da</b>	Originale brugsanvisninger	<b>it</b>	Istruzioni originali	<b>sk</b>	Pôvodný návod
<b>el</b>	Πρωτότυπο οδηγίων χρήσης	<b>ja</b>	元の手順	<b>sl</b>	Originalna navodila za uporabo
<b>en-us</b>	Original Instructions	<b>ko</b>	원래 지침	<b>sr</b>	Originalna uputstva
<b>es-es</b>	Instrucciones originales	<b>lt</b>	Originali instrukcija	<b>sv</b>	Originalinstruktioner
<b>es-mx</b>	Instrucciones originales	<b>lv</b>	Instrukcijas oriģinālvalodā	<b>tr</b>	Orijinal Talimatlar
<b>et</b>	Originaalkasutusjuhend	<b>mk</b>	Оригинално упатство	<b>uk</b>	Оригінальна інструкція
<b>fa</b>	دستورات اصلی	<b>nl</b>	Originele instructies	<b>zh-cn</b>	原始说明
		<b>no</b>	Opprinnelige instruksjoner	<b>zh-tw</b>	原廠操作說明

## Table of Contents – English (USA)

<b>General Information .....</b>	<b>48</b>
<b>General Safety Instructions .....</b>	<b>49</b>
<b>Operating Instructions .....</b>	<b>50</b>
<b>Inspection and Maintenance .....</b>	<b>51</b>
<b>Declaration of Conformity .....</b>	<b>52</b>

# 1 General Information

Product Name:	Shock-proof protection caps (Set)
Product Number:	T10608

## Intended use:

- ▶ The shock-proof protection caps protect from high voltages and arcs when performing repair work on open high-voltage batteries in vehicles in the workshop in accordance with the workshop manuals of the Volkswagen Group brands.

## Terms of use:

- ▶ For qualified workshop personnel only.
- ▶ Use the load holding device only for work approved by the Volkswagen Group.
- ▶ For use on high-voltage components only by qualified personnel.
- ▶ Use and store only in enclosed workshops with a roof.
- ▶ Use only with the approved accessories (see the Volkswagen Group brands workshop manuals).

## Included in Delivery

Product Name:	Quantity:
Shock-proof protection caps with plastic screw M6 x 10	30 pieces per set

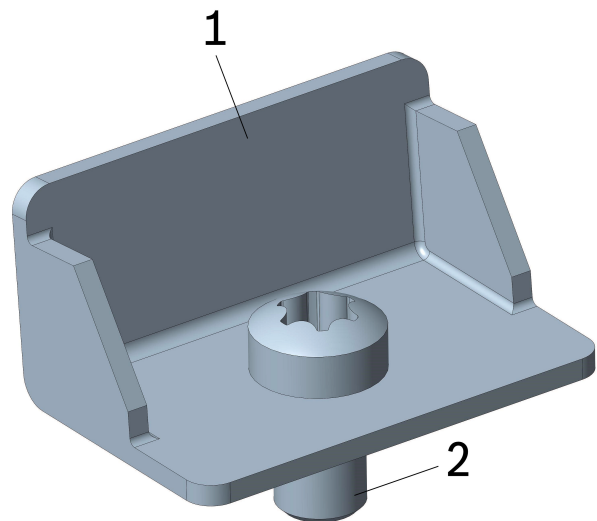


Figure 1: Shock-proof protection cap T10608

**1** Shock-proof protection cap

**2** Plastic screw M6 x 10

## 2 General Safety Instructions

### **WARNING**

#### **Read and follow all safety notes and instructions!**

Failure to follow the safety instructions could result in serious injuries and severe damage to materials.

Observe and follow the safety notes below.

---

- ▶ The shock-proof protection caps have been specifically constructed for their intended use. The safety of the shock-proof protection caps can no longer be ensured if they are misused or modified in ways not expressly approved by the manufacturer. Serious personal injuries or severe damage to materials could occur.
- ▶ Ensure that each person using the shock-proof protection caps is familiar with these instructions and can access them at all times.
- ▶ Ensure that all users are also familiar with the instructions of the additional tools and workshop equipment that are necessary for the work.
- ▶ Carefully read and adhere to the instructions in the technical safety information of the Volkswagen Group brands.
- ▶ Observe and follow the basic information and safety notes for high-voltage vehicles in the corresponding Volkswagen Group information media when using on vehicles with high-voltage components.
- ▶ Follow the laws specific to each country where used.
- ▶ Always wear the personal protective equipment as described in the workshop manuals of the Volkswagen Group brands.
- ▶ Use the shock-proof protection caps only for the work approved by the Volkswagen Group.
- ▶ Use the shock-proof protection caps only with the accessories approved by the Volkswagen Group.
- ▶ Use only the plastic screws included in delivery.
- ▶ Tighten the screws with the specified torque (see the Volkswagen Group brands workshop manuals).
- ▶ Keep the workplace tidy and clean. Liquids or other contaminants could affect the function of the shock-proof protection caps.

### 3 Operating Instructions

#### **WARNING**

##### **Risk of electric shock**

The HV battery is a high voltage storage capacitor (HVSM). High voltage could cause serious personal injuries or severe damage to materials.

- ▶ Observe and follow the hazard classification of the high voltage system in the workshop manuals.
- ▶ Observe and follow the notes and work instructions in the workshop manual.
- ▶ For qualified workshop personnel only.

1. Ensure that the shock-proof protection caps are complete and inspect them for visible damages such as signs of wear, deformation, breaks, and cracks before each use. Inspect the functionality of all of the plastic screw threads. Do not use the shock-proof protection caps and the plastic screws if damaged or in poor condition, but discard them immediately.
2. Put on the personal protective equipment as described in the workshop manuals of the Volkswagen Group brands.

#### **WARNING**

##### **Risk of electric shock**

High voltage and arcs could cause serious personal injuries to persons not wearing the specified personal protective equipment. Different personal protective equipment is necessary for different work steps.

- ▶ Wear and also remove the following personal protective equipment as described in the workshop manuals of the Volkswagen Group brands.
- ▶ Arc-tested clothing (jacket and pants or overall)
- ▶ Helmet with arc-tested visor
- ▶ Arc-tested gloves
- ▶ Safety shoes

3. Perform the necessary preparatory work to use the shock-proof protection caps in accordance with the workshop manuals of the Volkswagen Group brands.

#### **WARNING**

##### **Risk of electric shock**

High voltage and arcs could cause serious personal injuries.

- ▶ Observe and follow the order of work steps to remove and install the battery connectors specified in the workshop manuals of the Volkswagen Group brands.
- ▶ Install the shock-proof protection caps immediately after removing the battery connectors.

4. Screw the shock-proof protection caps onto the battery module to be removed and the neighboring battery modules in accordance with the workshop manuals of the Volkswagen Group brands.
5. Carry out further work as described in the workshop manuals.

#### **WARNING**

##### **Risk of electric shock**

High voltage and arcs could cause serious personal injuries.

- ▶ An assistant must be present to supervise certain work steps on the high-voltage battery. Further information can be found in the respective workshop manual of the Volkswagen Group brand.
- ▶ The assistant may not actively work on the open high-voltage battery.

6. Ensure that all parts of the special tool have been removed after completing the repair work.

## 4 Inspection and Maintenance

Ensure that the shock-proof protection caps are complete and inspect them for visible damages such as signs of wear, deformation, breaks, and cracks before each use. Inspect the functionality of all of the plastic screw threads. Do not use the shock-proof protection caps and the plastic screws if damaged or in poor condition, but discard them immediately.

Contact your first-level support representative with any queries.

### **NOTICE**

*Modifications to this product which have not been expressly approved by the manufacturer will void any warranty. The manufacturer assumes no liability for personal injury or damage to materials which occur as the result of improper use of this product.*

---

