

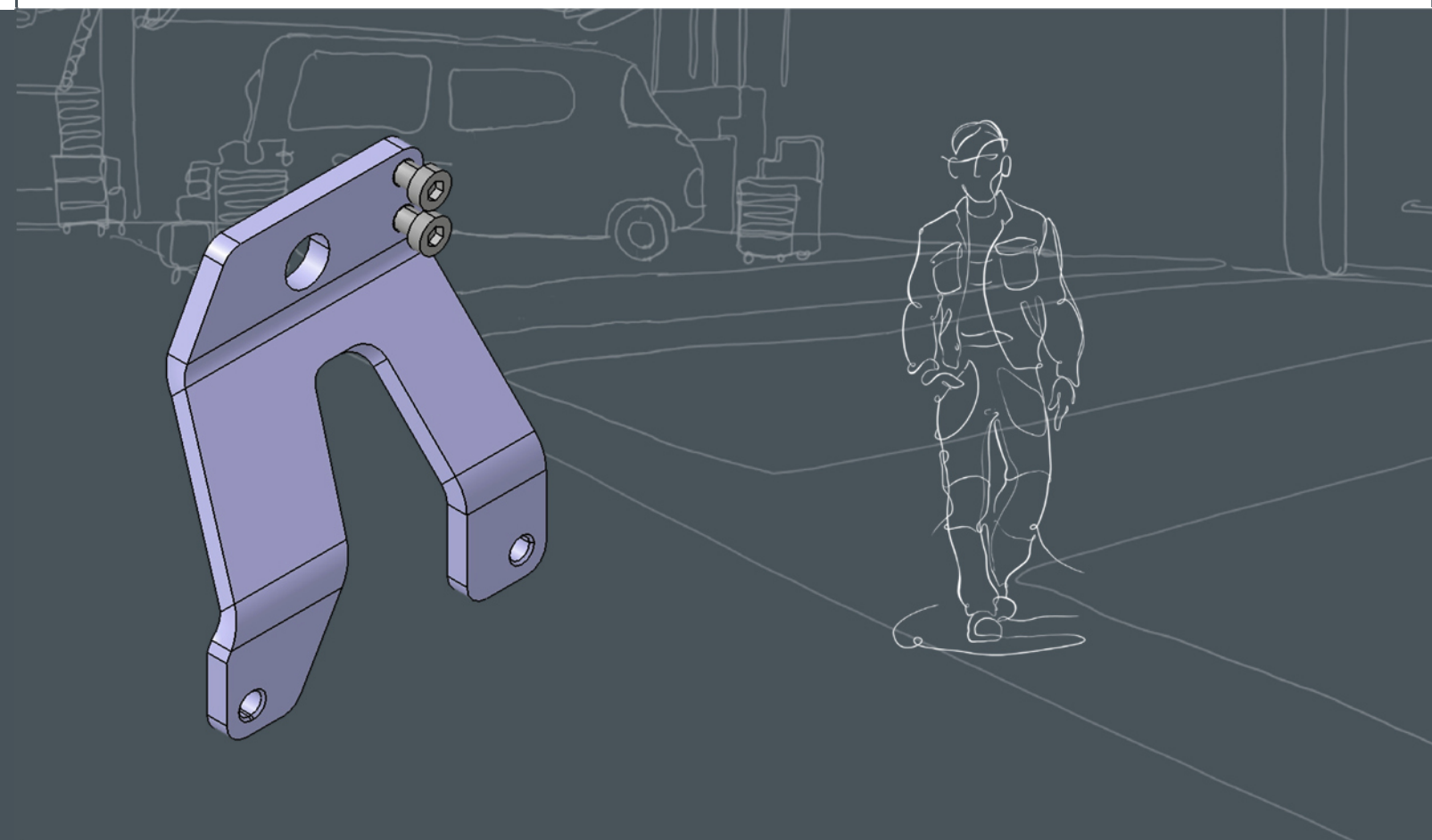
Volkswagen Aktiengesellschaft
K-GVO-LW
Konzern After Sales – Group Service,
Literatur und Systeme
Werkstattsausrüstung
Brieffach 011/4915
38442 Wolfsburg

For internal use only Subject to
technical changes Status 07/2023

Volkswagen Aktiengesellschaft
K-GVO-LW
Group After Sales – Group Service,
Literature and Systems
Workshop Equipment
Letter Box 011/4915
38442 Wolfsburg

For internal use only
Technical amendments possible
Status 07/2023

VOLKSWAGEN
AKTIENGESELLSCHAFT



Original operating instructions



Loop - T10666



Contents

Explanation of the symbols	1
General information	2
General safety instructions	3
Operation	4
Inspection and maintenance instructions	5
Declaration of conformity	6

Explanation of the symbols

 Warning	The signal word indicates a hazard with a medium level of risk which, if not avoided, can cause death or serious injury.
 Notice	The signal word denotes a hazard that, if not avoided, could cause damage to the product or the vehicle part.

General information

Product name:	Loop
Product type:	Load-carrying equipment
Product number:	T10666
Dead weight:	0,72 kg
max. load capacity:	204 kg
Coefficient for static test:	3,0

Intended use:

- The T10666 loop is used for lifting, holding and moving engines in the Volkswagen Group.

Conditions of use:

- For qualified workshop personnel only.
- Use only for work approved by the Volkswagen Group.
- Use only for loads up to 204kg.
- Use only on an engine approved by the Volkswagen Group with suitable mounting points.
- Do not pick up or lift persons or animals.
- Do not pick up or lift any objects other than those described in the Volkswagen Group brands' repair instructions.
- Only use in conjunction with a workshop crane approved by Volkswagen with sufficient load capacity.
- Do not stand under suspended loads.

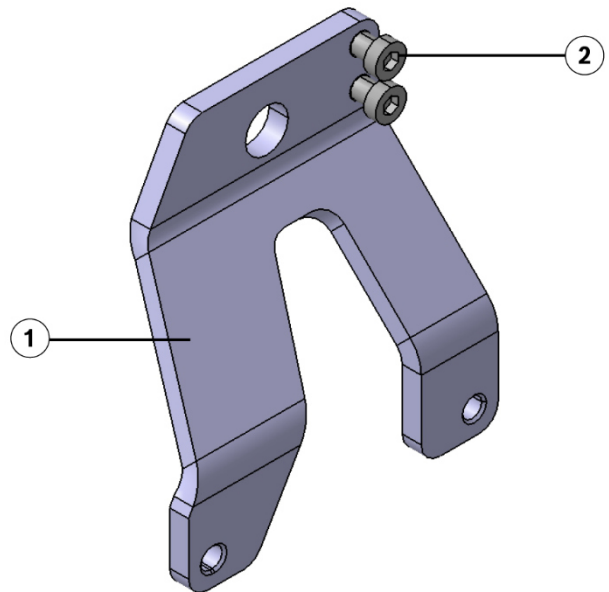


Figure 1- T10666/6 Loop

1. Loop
2. Hexagon socket head screws M8 x 15, 10.9, zinc plated, 2 pieces.

General safety instructions



Read and follow all safety notes and instructions!

Failure to comply with the safety information and instructions can cause serious injury and damage to property.

Observe and follow the safety instructions below.

- The T10666 loop has been specially designed for its purpose. If you misuse the T10666 loop or make unauthorised changes to the T10666 loop, its safety is no longer guaranteed. This can result in serious injuries or serious damage to property.
- Ensure that all users of the T10666 loop are familiar with these operating instructions and can access them at any time.
- Ensure that all users are also familiar with the operating instructions for the tools and operating equipment that are additionally required for the work.
- Carefully read and observe the instructions in the technical safety information of the Volkswagen Group brands.
- Only use loop T10666 for work approved by the Volkswagen Group.
- Do not exceed the maximum load capacity of 204 kg.
- Ensure that the place of use is sufficiently illuminated.
- Wear protective gloves to avoid cuts.
- Wear safety shoes (according to ISO 20345, S2).
- Position hands and feet so that there is no risk of crushing.
- Only use the screws supplied or screws with the same sizes and grades.
- Tighten the fittings to the torque specified in this manual and in the repair manuals of the Volkswagen Group brands.
- Only use the workshop crane on a level, horizontal and load-bearing floor.
- Make sure that the path is clear and clearly visible.
- Move the load slowly, not jerkily.
- Observe the loop and the load during the movements.
- The presence of persons under the load and in the danger zone is prohibited during the movement process.
- Do not work on suspended loads.

Operation

1. Check the loop T10666 and the hexagon socket screws for completeness and visible damage such as signs of wear, deformation, breaks, cracks and corrosion damage before each use. If defects are found, do not use the T10666 loop or the hexagon socket screws under any circumstances and discard them immediately.
2. Carry out the necessary preparatory work for the use of T10666 loop in according to the repair instructions.
3. Attach the T10666 loop to the engine as described in the Repair Guides. Tighten the two socket head screws to 35 Nm.



Warning

Danger due to tipping or falling of the load!

Incorrect attachment of the loop to the load can cause the load to tip over or fall!

This can lead to serious injuries and damage to property.

- Check the holding points on the engine for visible damage.
- Attach the holder to the workshop crane exactly as described in the repair guidelines.

4. Attach the T10666 loop to the workshop crane as described in the Repair Guides.
5. Carefully lift the engine. Drive the engine down to the location of use.



Warning

Risk of falling, slipping, swiveling or tipping the load!

If the workshop crane is moved carelessly, the load may fall or the workshop crane may tip over. This can lead to serious injuries and damage to property.

- Carry out transport, lifting or turning of the load at the appropriate speed.
 - Move the engine only close to the ground.
6. Carry out further work as described in the repair guidelines.
 7. After completing the repair work, ensure that all parts of the T10666 loop have been removed.
 8. Store loop T10666 in a clean and dry place.

Inspection and maintenance instructions

Check the loop T10666 and the hexagon socket screws for completeness and visible damage such as signs of wear, deformation, breaks, cracks and corrosion damage before each use. If defects are found, do not use the T10666 loop or the hexagon socket screws under any circumstances and discard them immediately.

Repairs may only be carried out by the manufacturer.

Discard the T10666 loop according to the local regulations. Only dispose of the metal parts of the loop at an authorised scrap metal collection point.

If you have any questions, please contact the 1st level support responsible for you.

Notice


If the product is modified in a way that has not been agreed with the manufacturer, all warranty claims are void. The manufacturer accepts no liability for damage to persons or objects caused by improper handling of the product.

Declaration of conformity

Declaration of conformity in the sense of the Machinery Directive 2006/42/EC, Annex II 1A

Manufacturer:	PILZ GmbH Grenzstraße 60/62 03238 Finsterwalde Germany
Authorised representative for the compilation of the technical documentation:	PILZ GmbH Grenzstraße 60/62 03238 Finsterwalde Germany
Product name:	Loop
Product type:	Load-carrying equipment
Product number:	T10666
The following harmonised standards were applied:	
EN ISO 11148-4	Hand-held non-electric machines
EN ISO 12100:2010	Safety of machinery - General principles for design - Risk assessment and mitigation
EN 13155:2003+A2:2009	Cranes - Safety - Loose load handling attachments

 Declaration of conformity

 Declaration of conformity

 Declaration of conformity

Brand:
Type: T10666 Loop
Performance:

Brand:
Type: T10666 Loop
Performance:

Brand:
Type: T10666 Loop
Performance:

We, Pilz GmbH, declare that this product complies with Directive 2006/42/EC and standard EN ISO 11148-4.

In the event of a change to the product not agreed with us, this declaration shall lose its validity.

We, Pilz GmbH, declare that this product complies with the "Supply of Machinery (Safety) Regulations 2008". Technical documentation is available from Pilz GmbH.

In the event of a product change not agreed with us this declaration loses its validity.

We, Pilz GmbH, declare that this product complies with the standard Regulation on Safety of Machines, Resolution No. 62. Technical documentation is available from Pilz GmbH. In the event of a product change not agreed with us, this declaration shall lose its validity.

Pilz GmbH
Grenzstraße 60/62,
03238 Finsterwalde, Germany

PILZ GmbH
Grenzstraße 60/62, 03238 Finsterwalde,
Germany

PILZ GmbH
Grenzstraße 60/62, 03238 Finsterwalde,
Germany

Date: 23.01.2024

Date: 23.01.2024

Date: 23.01.2024

Signature:

Signature:

Signature:





Torsten Lehmann
CEO Pilz GmbH

Torsten Lehmann
CEO Pilz GmbH

Torsten Lehmann
CEO Pilz GmbH